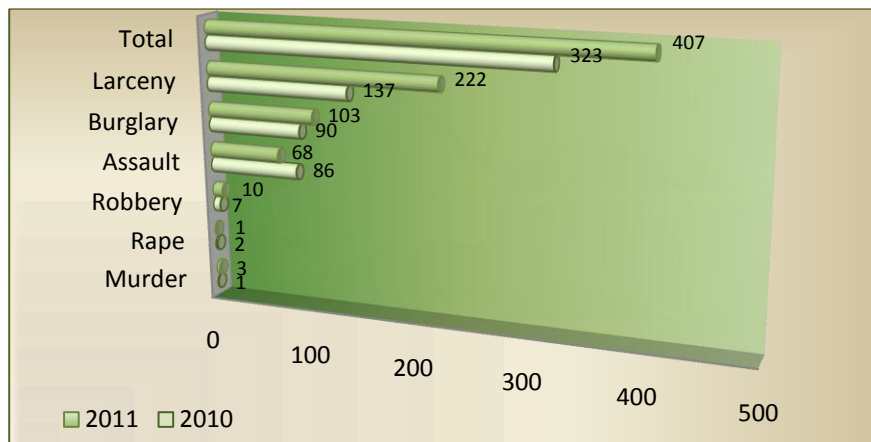


JANUARY 2011

BURGLARIES BY MONTH: 2010: 90 2011: **103** Change:+13 (+14%)

PART I CRIME COMPARISON: JAN. 01 TO JAN. 31



Murder	+2	+200%
Rape	-1	-50%
Robbery	+3	+42.9%
Assault	-18	-20.9%
Burglary	+13	+14%
Larceny	+85	+62.0%
Total	+84	+26%

OTHER DATA: JANUARY 2011

Incident Activity	22,798 ('10)	21,447 ('11)	-1,351	-6%
Aggravated Assaults	31	32	+1	+3%
Property Stolen		\$510,451	Recovered	\$46,913
Part 1 Crime Clearances		14%	Year to Date	14%
Burglary Clearances		3%	Year to Date	3%
Spousal Abuse		38	Year to Date	38